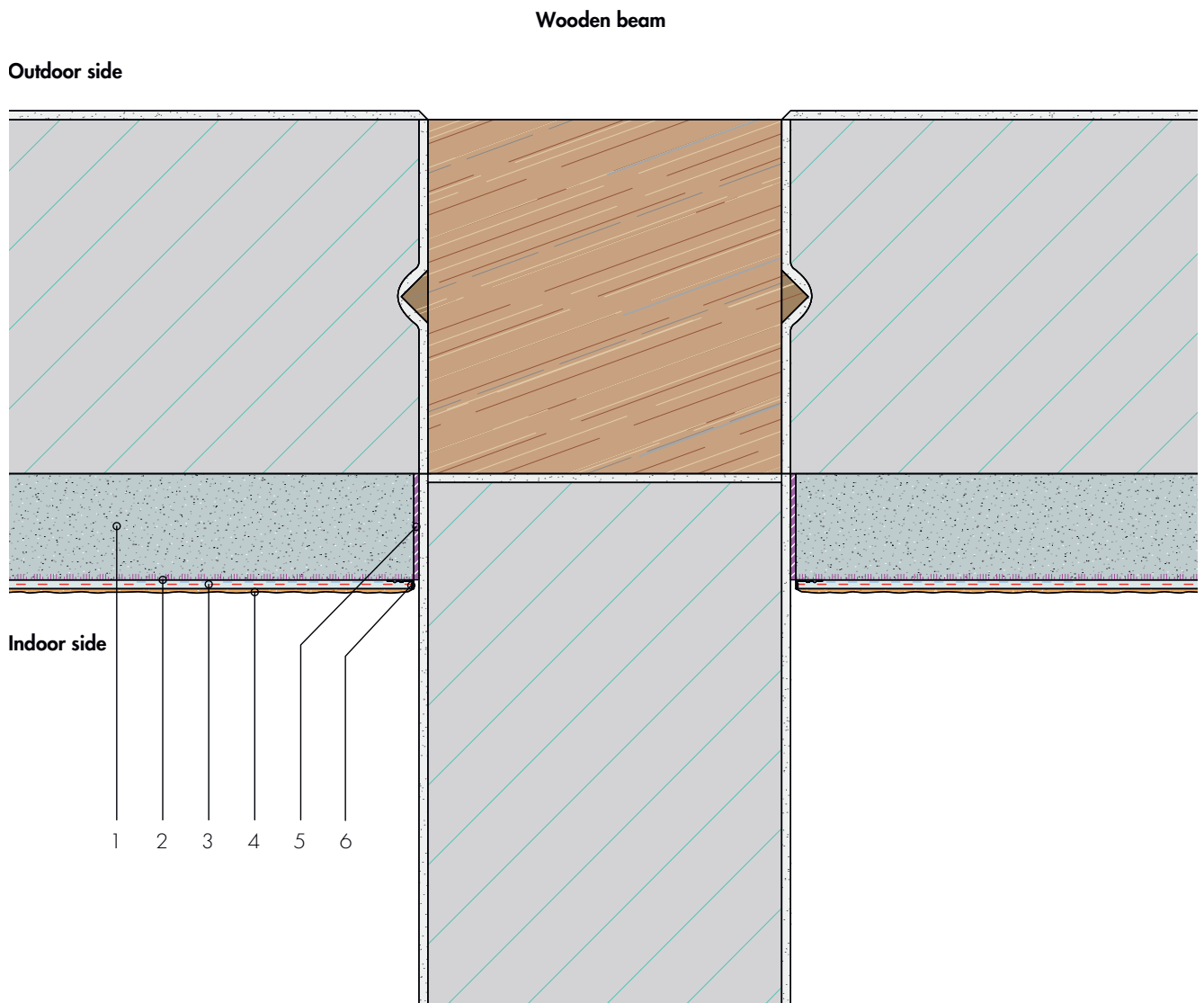


Partition wall

Indoor insulating plaster with bond to partition wall



- 1 Roughcast insulating plaster
- 2 Undercoat stabilizer Fixit 493*
- 3 Reinforcing textile mesh with Fixit 223 special embedding mortar, min 5mm
- 4 Mineral-based final coat and paint layer
- 5 SR grooved strip, compressible
- 6 Finishing profile with textile mesh