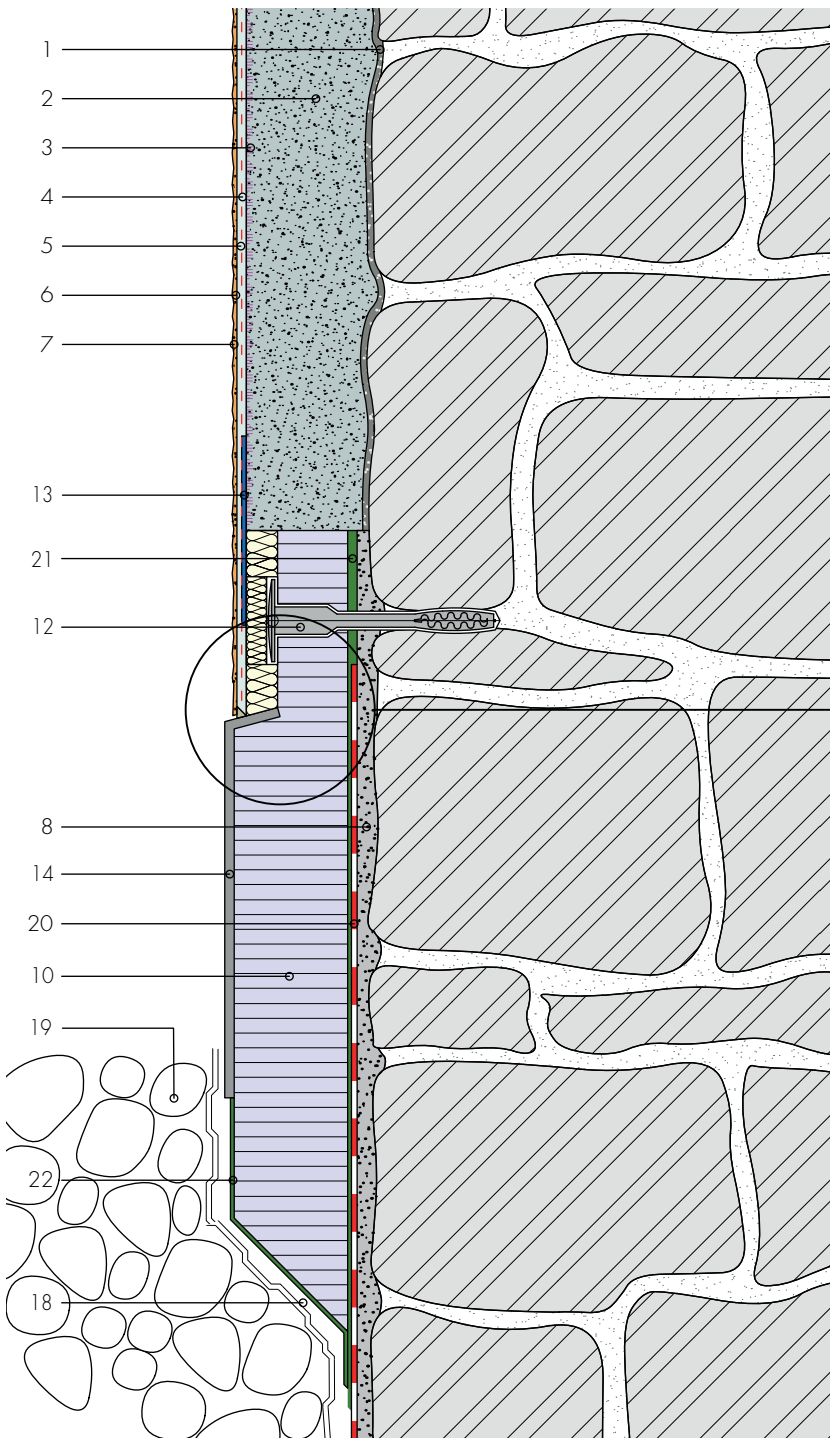


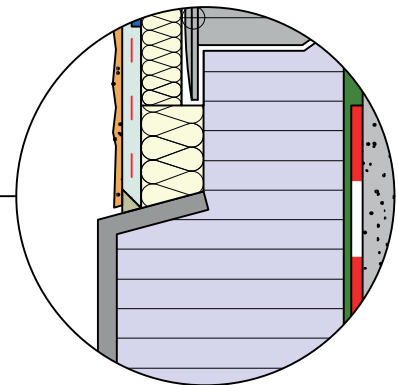
Base

Base cladding element made of glass-fibre reinforced concrete

Detail A4



Joint with concealed mastic filler and separating cut in final coating



- 1 Roughcast mortar Fixit 211, Fixit 670 or Röfix CalceClima pre-spraying mortar
- 2 Aerogel Insulating Plaster Fixit 222
- 3 Layer of undercoat stabilizer Fixit 493
- 4 Reinforcing textile mesh
- 5 Special embedding mortar Fixit 223
- 6 Mineral-based final render
- 7 Paint layer (suitable for final render)
- 8 Levelling layer Fixit 207 base plaster hydraulic lime
- 10 Base cladding panel
- 12 Mounting anchor bolt
- 13 Barrier textile
- 14 Base cladding panel of glass-fibre reinforced concrete
- 18 Protective layer
- 19 Drainage rubble fill
- 20 Vertical sealing layer, (provided on-site by contractor)
- 21 Attach with adhesive Fixit 373 Multiflex 2K Gey
- 22 Cover surface with layer of Fixit Multiflex 2K Grey