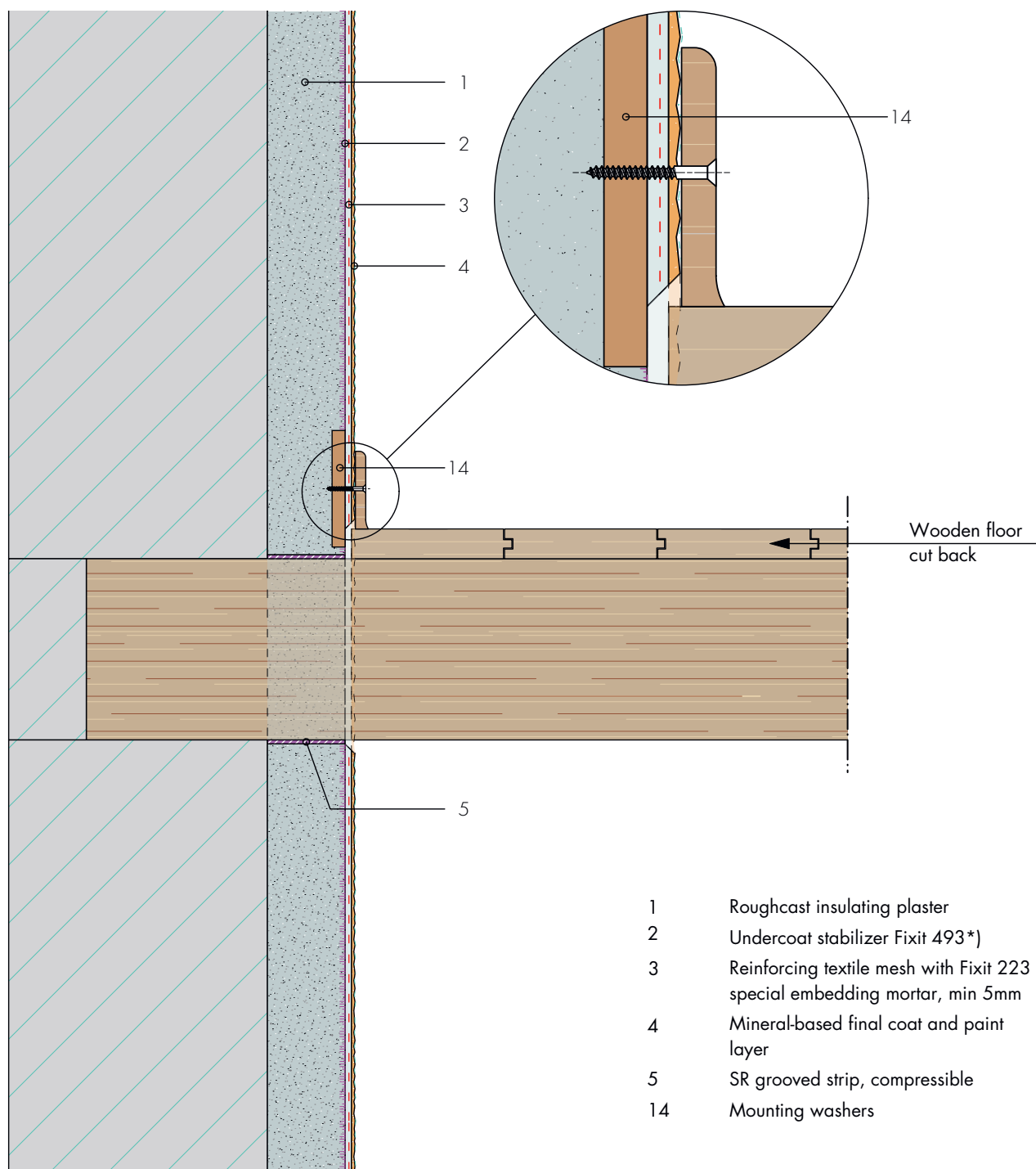


Wooden floor / ceiling

Indoor insulating plaster with interface to wooden floor / ceiling



- 1 Roughcast insulating plaster
- 2 Undercoat stabilizer Fixit 493*)
- 3 Reinforcing textile mesh with Fixit 223 special embedding mortar, min 5mm
- 4 Mineral-based final coat and paint layer
- 5 SR grooved strip, compressible
- 14 Mounting washers

*1) only with Fixit 222 Aeroael Insulating Plaster