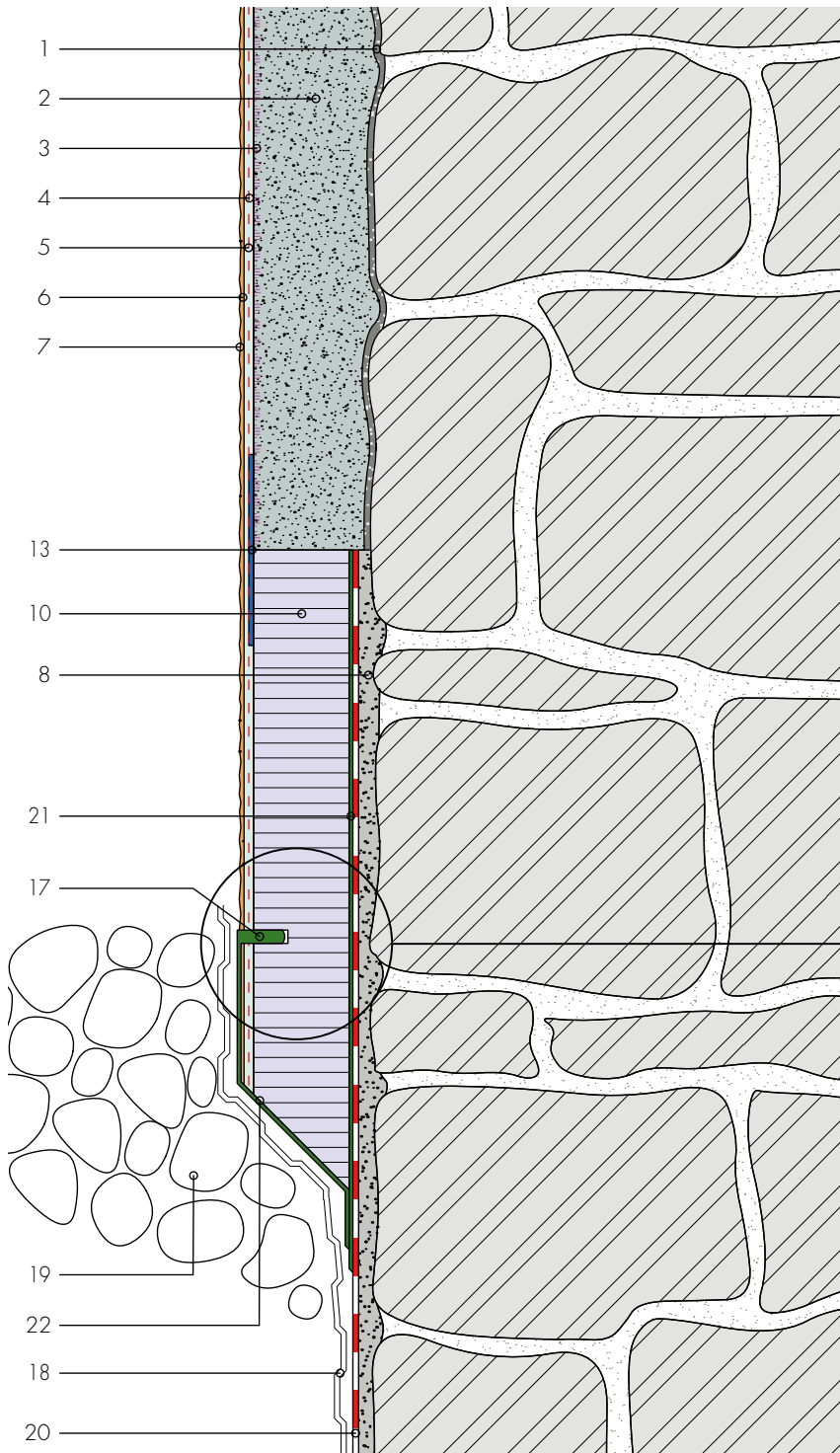


# Base

## Flush fitting base cladding with perimeter insulation

Detail A1



Detail of capillary break 5-8 mm, filled with  
Fixit 373 Multiflex base flagstone adhesive

- 1 Roughcast mortar Fixit 211, Fixit 670 or Röfix CalceClima pre-spraying mortar
- 2 Aerogel Insulating Plaster Fixit 222
- 3 Layer of undercoat stabilizer Fixit 493
- 4 Reinforcing textile mesh
- 5 Special embedding mortar Fixit 223
- 6 Mineral-based final render
- 7 Paint layer (suitable for final render)
- 8 Levelling layer Fixit 207 base plaster hydraulic lime
- 10 Base cladding panel
- 13 Barrier textile
- 17 Capillary break
- 18 Protective layer
- 19 Drainage rubble fill
- 20 Vertical sealing layer, (provided on-site by contractor)
- 21 Attach with adhesive Fixit 373 Multiflex 2K Grey or bitumen coating 2K
- 22 Cover surface with layer of: Bitumen coating 1K, 2K, Fixit Multiflex 2K Grey, or Optiflex 1K