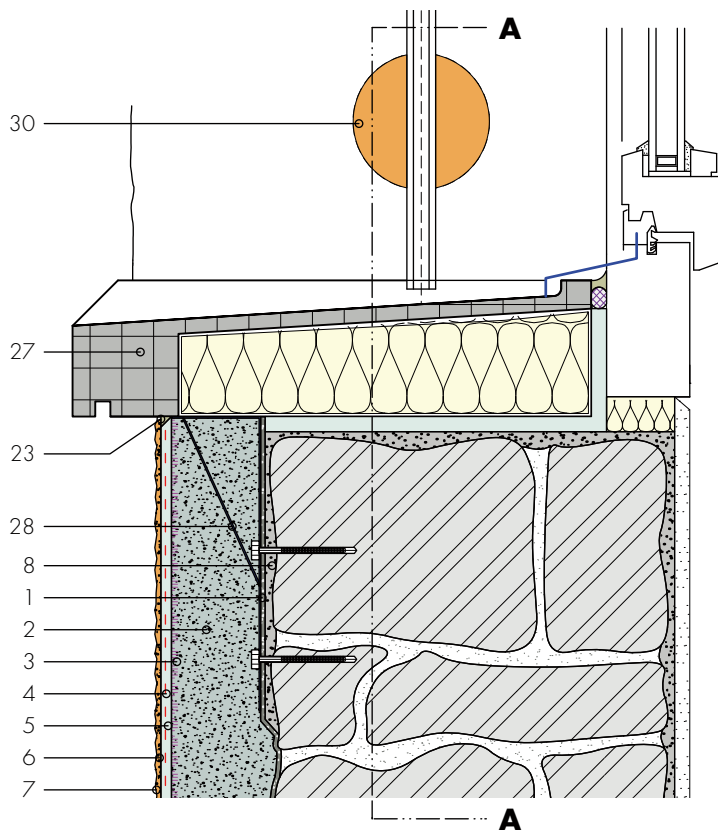
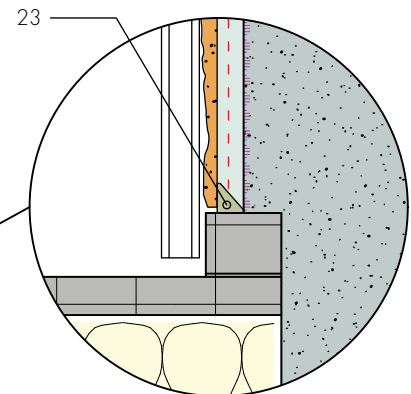
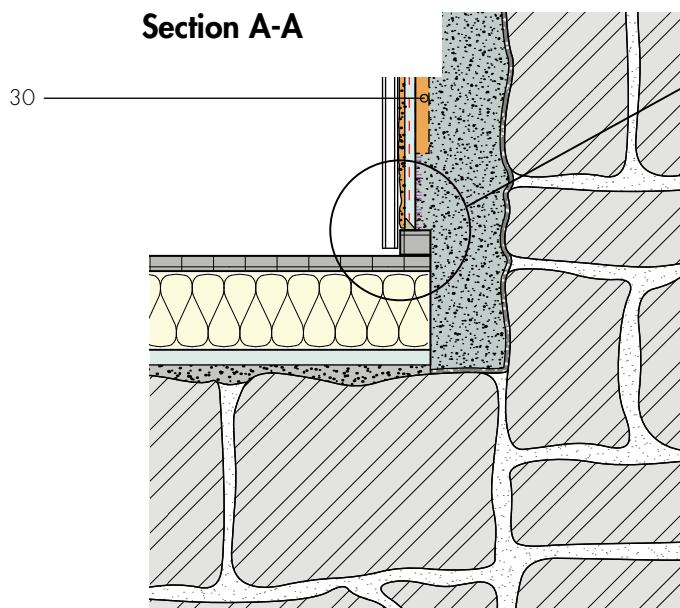


Window sill

Glass-fibre reinforced concrete window sill

Detail B1

**Section A-A**

- 1 Roughcast mortar Fixit 211, Fixit 670 or Röfix CalceClima pre-spraying mortar
- 2 Aerogel Insulating Plaster Fixit 222
- 3 Layer of undercoat stabilizer Fixit 493
- 4 Reinforcing textile mesh
- 5 Special embedding mortar Fixit 223
- 6 Mineral-based final render
- 7 Paint layer (suitable for final render)
- 8 Levelling layer Fixit 207 base plaster hydraulic lime
- 23 Concealed mastic joint and separating cut
- 27 GFRC window sill
- 28 Supporting angle
- 30 Mounting disc DoRondo PE